

SMART Iowa Occupational Profiles

Industrial Maintenance and Related Occupations



Control and Valve Installers and Repairers, Except Mechanical Doors

What do Control and Valve Installers and Repairers do?

Control and Valve Installers are responsible for the installation, maintenance, and repair of pressure, flow, and temperature control systems in industrial settings. They ensure these systems operate safely and efficiently across industries such as energy, manufacturing, and utilities.

What could your day-to-day work look like?

- Installing new control devices in industrial plants, ethanol facilities, or utility systems.
- Inspecting and troubleshooting systems to detect leaks, pressure issues, or faulty equipment.
- Calibrating and adjusting devices to ensure they meet precise operational settings.
- Reading blueprints and schematics to understand control system layouts.
- Working with hand tools and diagnostic equipment to repair and test control systems.

What credentials will I need?

Credentials for this role vary by employer, position level, and industry. While some jobs require only a high school equivalency diploma (HSED), others may require industry certifications or a degree. Many non-degree credentials offer comparable skills and are often interchangeable in the job market. Consult with Career Pathway Navigators to identify the best certification options based on your current experience and career goals.

Credentials such as:

- High school diploma or equivalent

Non-degree credentials such as:

- Certified Industry 4.0 Control Systems Specialist – Hawkeye Community College
- Hazardous Materials Awareness Certification – The Center for Domestic Preparedness (CDP)
- Certified Control Systems Technician, Level 1 – International Society of Automation
- Valve Technician Apprenticeship Certification - The United Association of Journeymen and Apprentices of the Plumbing and Pipefitting Industry of the United States and Canada/ Electrical Power Research Institute (UA/EPRI)

What technical skills should I develop?

- Programmable Logic Control
- Control Systems
- Human Machine Interfaces
- Electrical Safety
- Instrumentation

What qualities/abilities do employers look for?

- Willingness to learn
- Troubleshooting (problem solving)
- Strong verbal and written communication skills

Any other requirements?

- Valid driver's license
- Depending on the employer, between 0-3 years of experience



How much could I earn?

Hourly wages for Control and Valve Installers and Repairers range between **\$25.18-\$54.07 per hour.***

What are typical job titles?

- Valve Technician
- Control System Technician
- Instrumentation Technician
- Plant Operator

Who are possible employers?

- Transco Railway Products
- Trinity Industries
- CFU
- Midamerican
- Alliant
- Homeland Energy Solutions
- POET Bioprocessing
- Valero Renewables

**This wage range shows the pay for the lowest 10% and the highest 10% of earners to reflect how wages can grow over time. However, note that actual wages can vary significantly depending on factors such as industry, region, and level of experience.*

Sources: Bureau of Labor Statistics, Onet Online, Lightcast, The United Association of Journeymen and Apprentices of the Plumbing and Pipefitting Industry of the United States and Canada/ Electrical Power Research Institute

Electrical and Electronic Engineering Technologists and Technicians

What do Electrical and Electronic Engineering Technologists and Technicians do?

Electrical and Electronic Engineering Technologists and Technicians assist engineers in designing, testing, and maintaining electrical systems. They troubleshoot and repair equipment, replace defective parts, and use specialized tools to analyze system performance and ensure proper functionality.

What could your day-to-day work look like?

- Installing control devices in industrial plants or utility systems.
- Inspecting systems to identify issues like leaks or faulty equipment.
- Calibrating devices to ensure precise operation.
- Reading blueprints to understand system layouts.
- Using tools to repair and test control systems.

What credentials will I need?

Credentials for this role vary by employer, position level, and industry. While some jobs require only a high school equivalency diploma (HSED), others may require industry certifications or a degree. Many nondegree credentials offer comparable skills and are often interchangeable in the job market. Consult with Career Pathway Navigators to identify the best certification options based on your current experience and career goals.

Credentials such as:

- High school diploma or equivalent
- Associate's degree in Electronics

Non-degree credentials such as:

- Certified Engineering Technician - The National Institute for Certification in Engineering Technologies (NICET)
- Associate Certified Electronics Technician - The Electronics Technicians Association, International, Inc (ETA International) Institute (UA/EPRI)
- SACA: Certified Industry 4.0 Electrical Systems Specialist + Certified Industry 4.0 Instrumentation Specialist

What technical skills should I develop?

- Automation
- Programmable Logic Control
- Electronics
- Instrumentation
- Preventive Maintenance
- Control Systems
- Industrial Repair and Maintenance
- Manufacturing Processes

What qualities/abilities do employers look for?

- Troubleshooting (problem-solving)
- Strong verbal and written communication skills
- Operations
- Management
- Computer Literacy
- Research
- Self-Motivation

Any other requirements?

- Valid driver's license
- Depending on the employer, between 0–1 year of experience



How much could I earn?

Hourly wages for Electrical and Electronic Engineering Technologists range between **\$24.38-\$52.27 per hour.***

What are typical job titles?

- Automation Technicians
- Instrumentation Technicians
- Electrical Maintenance Technicians
- Instrumentation Specialists

Who are possible employers?

- Cambrex
- Conagra Brands
- Tyson Foods
- Zoetis
- Ethos International Ltd

**This wage range shows the pay for the lowest 10% and the highest 10% of earners to reflect how wages can grow over time. However, note that actual wages can vary significantly depending on factors such as industry, region, and level of experience.*

Electrical and Electronics Installers and Repairers, Transportation Equipment

What do Electrical and Electronics Installers & Repairers, Transportation Equipment do?

Electrical and Electronics Installers and Repairers specialize in maintaining and repairing mobile electronic systems on trains, watercraft, and other transportation equipment. They inspect, test, and troubleshoot electrical systems, ensuring proper functionality of communication, security, navigation, and safety control systems.

What could your day-to-day work look like?

- Installing and maintaining electronic systems in transportation equipment.
- Inspecting and testing electrical systems to identify malfunctions.
- Using diagnostic tools and software to troubleshoot issues.
- Reassembling and testing equipment after repairs.
- Adjusting and replacing wiring and relays in control systems.

What credentials will I need?

Credentials for this role vary by employer, position level, and industry. While some jobs require only a high school equivalency diploma (HSED), others may require industry certifications or a degree. Many nondegree credentials offer comparable skills and are often interchangeable in the job market. Consult with Career Pathway Navigators to identify the best certification options based on your current experience and career goals.

Credentials such as:

- High school diploma or equivalent

Non-degree credentials such as:

- Certified Electronics Systems Associate – The International Society of Certified Electronics Technicians (ISCET)
- Certified Engineering Technician - The National Institute for Certification in Engineering Technologies (NICET)
- SACA - Certified Industry 4.0 Automation Systems Specialist

What technical skills should I develop?

- Electronics
- Automation
- Electronics
- Instrumentation
- Programmable Logic Control

What qualities/abilities do employers look for?

- Troubleshooting (problem-solving)
- Strong verbal and written communication skills
- Management
- Operations
- Lifting ability
- Leadership

Any other requirements?

- Valid driver's license
- Depending on the employer, between 0-2 years of experience



How much could I earn?

Hourly wages for Electrical and Electronic Installers and Repairers, Transportation Equipment range between **\$26.08-\$45.07 per hour.***

What are typical job titles?

- Electronics Technicians
- Electronic Manufacturing Technicians
- Electronics Laboratory Technicians
- Lead/Staff Electronics Engineers
- Electronic Controls Technicians

Who are possible employers?

- Target
- Nestlé
- Trinity Health

**This wage range shows the pay for the lowest 10% and the highest 10% of earners to reflect how wages can grow over time. However, note that actual wages can vary significantly depending on factors such as industry, region, and level of experience.*

Sources: Bureau of Labor Statistics, Onet Online, Lightcast, Indeed, College Board, My Next Move, The International Society of Certified Electronics, The National Institute for Certification in Engineering Technologies

Electrical and Electronics Repairers, Commercial & Industrial Equipment

What do Electrical and Electronics Repairers, Commercial & Industrial Equipment do?

Electrical and Electronics Repairers maintain, test, and repair electronic devices like industrial controls, transmitters, and antennas. They diagnose equipment malfunctions, use test equipment and software, and ensure systems operate efficiently. Their work includes keeping performance logs and performing calibrations or tests on industrial equipment.

What could your day-to-day work look like?

- Diagnosing and troubleshooting malfunctions in industrial electronic systems.
- Repairing, testing, and calibrating electronic devices like controls and transmitters.
- Recording repairs, calibrations, and performance issues in equipment logs.
- Setting up and testing equipment to ensure proper operation.
- Using diagnostic tools and software for system analysis.

What credentials will I need?

Credentials for this role vary by employer, position level, and industry. While some jobs require only a high school equivalency diploma (HSED), others may require industry certifications or a degree. Many nondegree credentials offer comparable skills and are often interchangeable in the job market. Consult with Career Pathway Navigators to identify the best certification options based on your current experience and career goals.

Credentials such as:

- High school diploma or equivalent
- Associate's Degree in Electrical or Electronic Engineering Technology

Non-degree credentials such as:

- Certified Electronics Technician - The Electronics Technicians Association International (ETA)
- Certified Calibration Technician - The American Society for Quality

What technical skills should I develop?

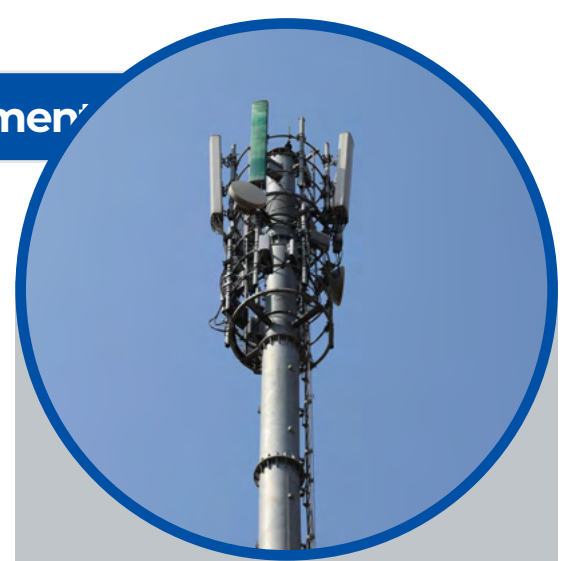
- Machinery
- Blueprinting
- Electrical Systems
- Hand Tools

What qualities/abilities do employers look for?

- Troubleshooting (problem-solving)
- Customer service
- Strong verbal and written communication skills
- Reliability
- Management
- Self-motivation

Any other requirements?

- Valid driver's license
- Depending on the employer, between 0-2 years of experience



How much could I earn?

Hourly wages for Electrical and Electronics Repairers, Commercial and Industrial Equipment range between **\$30.91-\$41.89 per hour.***

What are typical job titles?

- Industrial Maintenance Technicians
- Equipment Technicians
- Field Technicians
- Maintenance Repair Technicians

Who are possible employers?

- Mobile Technologies
- Trinity Industries
- Cross Company
- Rockwell Collins
- BAE Systems (Aerospace)
- Kraft-Heinz
- General Mills

**This wage range shows the pay for the lowest 10% and the highest 10% of earners to reflect how wages can grow over time. However, note that actual wages can vary significantly depending on factors such as industry, region, and level of experience.*

Sources: Bureau of Labor Statistics, Onet Online, Lightcast, Indeed, Iowa Works, My Next Move, College Board, The Electronics Technicians Association International, The American Society for Quality

Electro-Mechanical and Mechatronics Technologists and Technicians (Robotics Technicians)



What do Electro-Mechanical and Mechatronics Technologists and Technicians (Robotics Technicians) Technicians do?

Robotics Technicians assist in building and testing robotic systems, ensuring they work properly before use. They install, program, and troubleshoot electrical and mechanical issues in robotics equipment. They also operate or oversee the operation of robots, collaborating closely with engineers to ensure optimal performance.

What could your day-to-day work look like?

- Assisting in building and assembling robotic equipment.
- Testing robotic systems to ensure proper operation.
- Installing and programming robotic systems.
- Troubleshooting electrical and mechanical issues with robots.
- Operating or overseeing the operation of robots, working with engineers.

What credentials will I need?

Credentials for this role vary by employer, position level, and industry. While some jobs require only a high school equivalency diploma (HSED), others may require industry certifications or a degree. Many nondegree credentials offer comparable skills and are often interchangeable in the job market. Consult with Career Pathway Navigators to identify the best certification options based on your current experience and career goals.

Credentials such as:

- High school diploma or equivalent

Non-degree credentials such as:

- Certified Robot Programming - Fuji Automatic Numerical Control (FANUC)
- Certified Robot Operator - Fuji Automatic Numerical Control (FANUC)
- Mechatronics Certification - Level I and II - Packaging Machinery Manufacturers Institute (PMMI)
- SACA: Certified Industry 4.0 Robotics Specialist

What technical skills should I develop?

- Arithmetic
- Automation
- Machinery
- Preventative Maintenance
- Continuous Improvement Process
- Material Handling Equipment
- Robotics/Robotic Systems

What qualities/abilities do employers look for?

- Troubleshooting
- Problem-solving
- Strong verbal and written communication skills
- Willingness to learn
- Active listening
- Detail-oriented

Any other requirements?

- Valid driver's license
- Depending on the employer, between 0-2 years of experience

How much could I earn?

Hourly wages for Robotics Technicians range from **\$23.85-\$46.14 per hour.***

What are typical job titles?

- Robot Technicians
- Robotics Specialists
- Robotic Weld Technicians
- Assembly Technicians
- Automation Specialists
- Mechatronics Technicians

Who are possible employers?

- Volt
- Pacific Companies
- Amazon
- Conagra Brands

**This wage range shows the pay for the lowest 10% and the highest 10% of earners to reflect how wages can grow over time. However, note that actual wages can vary significantly depending on factors such as industry, region, and level of experience.*

First-Line Supervisors of Mechanics, Installers, & Repairers

What do First-Line Supervisors of Mechanics, Installers, & Repairers Technicians do?

First-line supervisors oversee the daily activities of mechanics, installers, and repairers to ensure work is completed safely and efficiently. They assign tasks, determine schedules, and monitor progress. They also inspect work, ensure proper tool maintenance, and provide safety training to prevent accidents.

What could your day-to-day work look like?

- Supervising daily activities of repair and maintenance teams.
- Assigning tasks and setting work schedules.
- Inspecting completed work to ensure it meets standards.
- Providing safety training to employees.
- Managing tools, equipment, and supplies for repairs.

What credentials will I need?

Credentials for this role vary by employer, position level, and industry. While some jobs require only a high school equivalency diploma (HSED), others may require industry certifications or a degree. Many nondegree credentials offer comparable skills and are often interchangeable in the job market. Consult with Career Pathway Navigators to identify the best certification options based on your current experience and career goals.

Credentials such as:

- High school diploma or equivalent
- Associate's degree
- Bachelor's degree

Non-degree credentials such as:

- Certified Supervisor of Maintenance/Equipment – North American Transportation Management Institute
- Certified Equipment Manager – Association of Equipment Management Professionals
- Certified Service Manager – Professional Service Associate
- Certified Maintenance & Reliability Professional – Society for Maintenance & Reliability Professionals

What technical skills should I develop?

- Preventative Maintenance
- Electrical Systems
- Purchasing
- Equipment Repair
- Electrical Employee Engagement
- Manufacturing Engineering

What qualities/abilities do employers look for?

- Strong verbal and written communication skills
- Troubleshooting (problem solving)
- Operations
- Team leadership
- Scheduling

Any other requirements?

- Valid driver's license
- Depending on the employer, between 0-2 years of experience



How much could I earn?

Hourly wages for First-line Supervisors of Mechanics, Installers, and Repairers range between **\$24.77-\$55.41 per hour.***

What are typical job titles?

- Maintenance Supervisors
- Maintenance Planners
- Maintenance Managers
- Maintenance Shift Supervisors

Who are possible employers?

- Tyson Foods

**This wage range shows the pay for the lowest 10% and the highest 10% of earners to reflect how wages can grow over time. However, note that actual wages can vary significantly depending on factors such as industry, region, and level of experience.*

Sources: Bureau of Labor Statistics, Onet Online, Lightcast, North American Transportation Management Institute, Association of Equipment Management Professionals, Professional Service Associate, Society for Maintenance & Reliability Professionals

Industrial Production Managers

What do General & Operations Managers, Industrial Production Managers, Facilities Managers do?

These managers oversee operations to ensure efficiency and goal achievement. General and Operations Managers focus on policies, daily operations, and resource planning across departments. Industrial Production Managers direct manufacturing processes, production schedules, and quality control. Facilities Managers maintain the functionality, safety, and sustainability of buildings and grounds, ensuring operational

What could your day-to-day work look like?

- Overseeing daily operations across multiple departments or locations.
- Managing production schedules, ensuring quality control, and maintaining equipment.
- Ensuring workplace safety and coordinating production floor activities.
- Maintaining building functionality and sustainability.
- Planning and allocating resources effectively across teams.

What credentials will I need?

Credentials for this role vary by employer, position level, and industry. While some jobs require only a high school equivalency diploma (HSED), others may require industry certifications or a degree. Many nondegree credentials offer comparable skills and are often interchangeable in the job market. Consult with Career Pathway Navigators to identify the best certification options based on your current experience and career goals.

Credentials such as:

- High school diploma or equivalent
- Bachelor's degree

Non-degree credentials such as:

- Certified Service Manager – ETA International
- Strategic Management Professional – Association for Strategic Planning
- Continuous Improvement Manager Certification – Six Sigma Global Institute
- Certified Facility Manager – International Facility Management Association

What technical skills should I develop?

- Continuous Improvement Process
- Marketing
- Auditing
- Operations Management

What qualities/abilities do employers look for?

- Operations
- Management
- Leadership
- Customer service
- Coaching

Any other requirements?

- Valid driver's license
- Depending on the employer, between 0-2 years of experience



How much could I earn?

Hourly wages for General and Operations Managers, Industrial Production Managers, and Facilities Managers range between **\$26.89 - \$73.00 per hour.***

What are typical job titles?

- Technical Operations Supervisor
- Production Manager
- Operations Manager

Who are possible employers?

- Kwik Trip
- Menards
- MediaCom
- John Deere

**This wage range shows the pay for the lowest 10% and the highest 10% of earners to reflect how wages can grow over time. However, note that actual wages can vary significantly depending on factors such as industry, region, and level of experience.*

Sources: Bureau of Labor Statistics, Onet Online, Lightcast, ETA International, Association for Strategic Planning, Six Sigma Global Institute, International Facility Management Association

Helpers: Installation, Maintenance, and Repair Workers



What do Helpers: Installation, Maintenance, and Repair Workers, do?

Helpers assist skilled workers in maintaining and repairing vehicles, machinery, and equipment. They provide tools and materials, clean work areas, and help install or replace parts using hand or power tools. They also examine equipment for defects, test machinery, and monitor operations to ensure safety and functionality.

What could your day-to-day work look like?

- Assisting with the installation or repair of machinery and equipment.
- Providing tools, materials, and supplies to workers.
- Cleaning work areas, machines, and tools.
- Examining and testing machinery for defects.
- Monitoring equipment to ensure safe and efficient operation.

What credentials will I need?

Credentials for this role vary by employer, position level, and industry. While some jobs require only a high school equivalency diploma (HSED), others may require industry certifications or a degree. Many nondegree credentials offer comparable skills and are often interchangeable in the job market. Consult with Career Pathway Navigators to identify the best certification options based on your current experience and career goals.

Credentials such as:

- High school diploma or equivalent

Non-degree credentials such as:

- Safety and Health Fundamentals Certificate - Occupational Safety & Health Administration (OSHA)
- SACA: C-101 Associate-Basic Operations

What technical skills should I develop?

- Plumbing
- Building and Construction
- Equipment Maintenance
- Machinery
- HVAC

What qualities/abilities do employers look for?

- Communication
- Troubleshooting (problem-solving)
- Operations
- Management
- Detail-orientation

Any other requirements?

- Valid driver's license
- Depending on the employer, between 0-3 years experience

How much could I earn?

Hourly wages for Installation, Maintenance, and Repair Workers range between **\$12.82-\$22.48 per hour.***

What are typical job titles?

- Maintenance Workers
- Maintenance Assistants
- Maintenance Helpers
- Property Maintenance Workers

Who are possible employers?

- Friendship Village Retirement Community
- Advance Services
- Marriott International
- Care Initiatives
- Kerry Group
- City Of Cedar Falls

**This wage range shows the pay for the lowest 10% and the highest 10% of earners to reflect how wages can grow over time. However, note that actual wages can vary significantly depending on factors such as industry, region, and level of experience.*

Industrial Machinery Mechanics

What do Industrial Machinery Mechanics do?

Industrial Machinery Mechanics repair, install, adjust, or maintain industrial production and processing machinery or refinery and pipeline distribution systems. They may also install, dismantle, or move machinery and heavy equipment.

What credentials will I need?

Credentials for this role vary by employer, position level, and industry. While some jobs require only a high school equivalency diploma (HSED), others may require industry certifications or a degree. Many nondegree credentials offer comparable skills and are often interchangeable in the job market. Consult with Career Pathway Navigators to identify the best certification options based on your current experience and career goals.

Credentials such as:

- High school diploma or equivalent
- Associate's degree

Non-degree credentials such as:

- Industrial Maintenance Support Mechanic – National Craft Assessment and Certification Program
- Industrial Maintenance Mechanic – National Craft Assessment and Certification Program
- Combination of SACA: Certified Industry 4.0 Electro-Fluid Power Systems Specialist + Certified Industry 4.0 Mechanical Systems Specialist + Certified Industry 4.0 Electrical Systems Specialist

What technical skills should I develop?

- Industrial Repair
- Hydraulics
- Hand Tools
- Welding
- Preventive Maintenance
- Equipment Repair

What qualities/abilities do employers look for?

- Strong verbal and written communication skills
- Troubleshooting (problem solving)
- Lifting ability

Any other requirements?

- Depending on the employer, between 0-3 years experience



How much could I earn?

Hourly wages for Industrial Machinery Mechanics range between **\$23.43-\$39.20 per hour.***

What are typical job titles?

- Industrial Mechanics
- Industrial Maintenance Technicians

Who are possible employers?

- Conagra
- Nestle
- John Deere
- East Penn Manufacturing
- Tyson Foods

**This wage range shows the pay for the lowest 10% and the highest 10% of earners to reflect how wages can grow over time. However, note that actual wages can vary significantly depending on factors such as industry, region, and level of experience.*

General Maintenance and Repair Workers

What do General Maintenance and Repair Workers do?

Industrial Machinery Mechanics repair, install, adjust, or maintain machinery in production, processing, or refinery systems. They also install, dismantle, or move heavy equipment, ensuring systems function smoothly and efficiently.

What could your day-to-day work look like?

- Installing, adjusting, and maintaining industrial machinery.
- Repairing production, processing, or refinery equipment.
- Dismantling and moving heavy machinery.
- Troubleshooting machinery malfunctions and ensuring systems are functioning efficiently.
- Monitoring equipment to prevent breakdowns.

What credentials will I need?

Credentials for this role vary by employer, position level, and industry. While some jobs require only a high school equivalency diploma (HSED), others may require industry certifications or a degree. Many nondegree credentials offer comparable skills and are often interchangeable in the job market. Consult with Career Pathway Navigators to identify the best certification options based on your current experience and career goals.

Credentials such as:

- High school diploma or equivalent
- Associate's degree

Non-degree credentials such as:

- Industrial Maintenance Support Mechanic – National Craft Assessment and Certification Program
- Industrial Maintenance Mechanic – National Craft Assessment and Certification Program
- Certified Industry 4.0 Operations Specialist

What technical skills should I develop?

- Machinery
- Plumbing
- Preventative Maintenance
- Hydraulics
- Electrical Wiring

What qualities/abilities do employers look for?

- Troubleshooting (problem solving)
- Strong verbal and written communication skills
- Customer service
- Lifting ability

Any other requirements?

- Valid driver's license
- Depending on the employer, between 0-1 year of industry experience



How much could I earn?

Hourly wages for Maintenance and Repair Workers, General range between **\$17.10-\$32.74 per hour.***

What are typical job titles?

- Maintenance Technician
- Maintenance Generalist
- Field Service Technician

Who are possible employers?

- ManpowerGroup
- Tyson Foods
- Adecco
- Stoughton Trailers

**This wage range shows the pay for the lowest 10% and the highest 10% of earners to reflect how wages can grow over time. However, note that actual wages can vary significantly depending on factors such as industry, region, and level of experience.*

Machinery Maintenance Workers



What do Machinery Maintenance Workers do?

Machinery Maintenance Workers perform routine maintenance and repairs on industrial equipment. They inspect machines, replace or adjust components, lubricate machinery to prevent wear, and dismantle or reassemble equipment. They collaborate with teams, maintain records, and use various tools to keep machinery running efficiently.

What could your day-to-day work look like?

- Performing routine maintenance and repairs on machinery.
- Inspecting equipment for efficiency and mechanical issues.
- Replacing or adjusting components as needed.
- Lubricating machinery to prevent wear.
- Collaborating with teams to move or repair equipment.

What credentials will I need?

Credentials for this role vary by employer, position level, and industry. While some jobs require only a high school equivalency diploma (HSED), others may require industry certifications or a degree. Many nondegree credentials offer comparable skills and are often interchangeable in the job market. Consult with Career Pathway Navigators to identify the best certification options based on your current experience and career goals.

Credentials such as:

- High school diploma or equivalent

Non-degree credentials such as:

- Level I Machine Lubricant Analyst – International Council for Machinery Lubrication
- Machine Maintenance, Service, and Repair Level III – Machine Repair/Rebuilding - National Institute for Metalworking Skills
- Certified Maintenance and Reliability Technician – Society for Maintenance & Reliability Professionals
- Combination of SACA: Certified Industry 4.0 Electro-Fluid Power Systems Specialist + Certified Industry 4.0 Mechanical Systems Specialist + Certified Industry 4.0 Electrical Systems Specialist

What technical skills should I develop?

- Engine Repair
- Agricultural Equipment

What qualities/abilities do employers look for?

- Customer service
- Mechanical aptitude

Any other requirements?

- Valid driver's license

How much could I earn?

Hourly wages for Maintenance Workers, Machinery range between **\$24.53-\$36.58 per hour.***

What are typical job titles?

- Machine Repairer
- Lubricator
- Maintenance Mechanic

Who are possible employers?

- Vermeer Corporation
- Tyson
- Conagra
- Nestle
- John Deere
- MasterBrand
- P&K

**This wage range shows the pay for the lowest 10% and the highest 10% of earners to reflect how wages can grow over time. However, note that actual wages can vary significantly depending on factors such as industry, region, and level of experience.*